

THE HOST COUNTRY

THE POSTCARDS

ALBANIA

AVEIRO



The city where EUGENT BUSHPEPA filmed his Postcard in February.

Why here? Aveiro is in the north of Portugal, next to the Atlantic Ocean, known for its Ria (estuary), that crosses the city with a network of canals, through which moliceiros, the local boats, meander. Some call it the “Portuguese Venice”.

How to get there? Aveiro is one hour south of Porto Airport. 86.4 kilometres along the A1, the main motorway in Portugal. Buses and trains are also available.

What to do? You can’t miss the Art Nouveau style buildings, many of which can be found along the main canal. This is one of the many reasons why you must take a tour in the traditional moliceiro boats, and do visit the Convento de Jesus.

What not to miss? You can’t skip ovos moles, a sweet made with eggs and sugar, typical of Aveiro. Near the city is a town called Ílhavo, known for its fishing tradition, and Costa Nova, known for its striped “sheds”.

SITE: <https://www.visitportugal.com/en/content/visit-aveiro>



ARMENIA

GRÂNDOLA, Alentejo

The city near to where SEVAK KHANAGYAN filmed his Postcard in April.

Why here? Grândola is one of the most known cities in the Alentejo. The Alentejo is one of the biggest and most beautiful regions of Portugal. The countryside is known for its plains in the south and for its granite hills near the border with Spain. Olive trees, cork oaks, a long coast of white sand beaches and, traditionally, a warm climate, are the trademarks of a region that extends to 27,272 square kilometres, 29,6% of Portugal.

How to get there? 116km separate Lisbon from Grândola and you can get there taking the A2 and A12 highways. An 80-minute ride that makes Grândola and the Alentejo coast an excellent place to visit for a day if you are

in Portugal for the Eurovision Song Contest.

What to do to? Although the region is known for the farming cultures, especially rice, locals and tourists are attracted to the wonderful beaches of the coast near Grândola. Melides, Comporta, Carvalhal or Pego are some of the names you should keep in mind if you want to have an unforgettable summer day.

What not to miss? You can't miss the gastronomy and can't skip the wonderful restaurants of Grândola and of the entire Alentejo region. You can't miss the magnificent Alentejo wines and the incomparable olive oil.

SITE: <https://www.visitportugal.com/en/NR/exeres/C9304373-72EB-464E-9103-41E42E313050>



AUSTRALIA

ALFAMA, Lisbon

The neighbourhood where JESSICA MAUBOY filmed her Postcard in April.

Why here? Alfama is one of the oldest districts of Lisbon and is also the capital of Fado, the Portuguese music that is also considered the sound of the Portuguese soul. The medieval alleyways, the ancient houses, and the views to the Tejo River make Alfama one of the most beautiful places in town. As Lisboetas used to say: “Easy to get lost in, even easier to find!”.

How to get there? Alfama is minutes away from Terreiro do Paço, where both Eurovision Village and EuroClub are located. You can get there on foot, walking up the hill or by taking a yellow tram.

What to do to? Alfama is a magical labyrinth of streets waiting to be explored. The little tascas (cafés), the corners, the tiny plazas, the wonderful viewpoints. Everything deserves your full attention so take a full day to explore the entire district. The Castle of São Jorge, the National Pantheon and Saint Anthony’s Church are three of the most important landmarks of Lisbon located in Alfama. To better understand the history of Fado, don’t skip the Museu do Fado.

What not to miss? Don’t miss the Fado singers in the bars and restaurants all over Alfama. Their voices accompanied by the magic and the talent of the Portuguese guitar players are unique in the world.

SITE: www.visitlisboa.com/lisbon/lisbon-region/alfama-castelo-e-mouraria



AUSTRIA

MONSANTO

The village where CESÁR SAMPSON filmed his Postcard in February.

Why here? Monsanto is considered the “Most Portuguese Village in Portugal”, a title won in 1938. Centuries before that, D. Afonso Henriques, the first Portuguese king, conquered Monsanto from the Moors in 1165 and gave it to the Knights Templar. They rebuilt the castle that once belonged to the Romans.

How to get there? Monsanto is in the centre of Portugal, in the Beira Interior region, between the foothills of the Serra da Gardunha and the Ponsul River. To drive from Porto takes about 2 hours (220 km). From Lisbon, you'll need 3 hours to drive the 276km.

What to do? Visit the streets and marvel at the little houses nestled between and under vast granite boulders, enjoy the unique feeling of the village. Climb up to the castle and see one of the most beautiful views of the whole region.

What not to miss? In the region of Beira Interior, you have eleven more historic villages you really can't skip: Piódão, Linhares da Beira, Trancoso, Marialva, Figueira de Castelo Rodrigo, Almeida, Castelo Mendo, Sortelha, Belmonte, Castelo Novo and Idanha-a-Velha.

SITE: <https://www.visitportugal.com/en/destinos/centro-de-portugal/73751>



AZERBAIJAN

MONSARAZ

The village near where AISEL filmed his Postcard in February.

Why here? Monsaraz is a beautiful medieval village in the heart of the Alentejo, just 55km from Évora. Made of lime and slate, this historic village, one of the oldest in Portugal, is considered a Museum Village of the Alentejo. In 2017, Monsaraz was voted the most beautiful Monument Village in the Portugal, as part of the 7 Wonders of Portugal – Villages awards.

How to get there? Monsaraz is in the Alentejo, 185km west of Lisbon. You can get there by car in two hours, along the motorways A2 and A6.

What to do? Walk through the streets of Monsaraz, see the houses and squares, the churches and the Pelourinho. Monsaraz Castle is a unique tourist spot in Portugal. It is one of the most splendid places to look at the Alqueva Dam.

What not to miss? Near Monsaraz, you can visit the Alqueva Dam. This is the largest artificial lake in Europe and one of the greatest Portuguese constructions of the century. The Great Lake, resulting from the Alqueva Reservoir, provides the perfect place for spending a few days relaxing and in good company. You can't skip a good night's sleep on the houseboats.

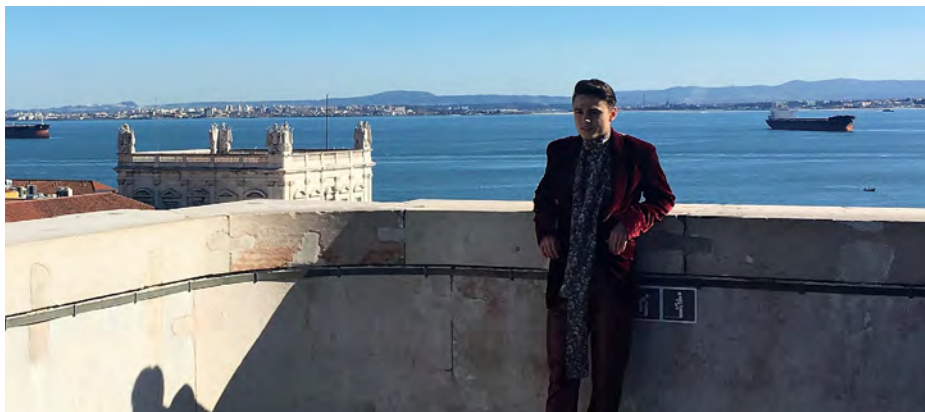
SITE: <https://www.visitportugal.com/en/NR/exeres/1BD1968A-2C69-4CD8-A7CE-42D6A88F97C7>

BELARUS

ARCO DA RUA AUGUSTA, Lisbon

The place where ALEKSEEV filmed his Postcard in February.

Why here? One of the most fabulous views over Lisbon and the Tejo River, right next to Eurovision Village, on the historical square of Terreiro do Paço.



How to get there? You can get there very easily. The Arco is at the end of Rua Augusta, on Terreiro do Paço, the main square of the city, and the home to Eurovision Village.

What to do to? Admire the 360° view over the city. It's unique! You are in the heart of Lisbon, the Baixa, rebuilt by the Marquis of Pombal after the 1755 earthquake, fire and tsunami that destroyed the city.

What not to miss? You can't skip Rua Augusta and the Baixa, with all the straight streets, shops, restaurants. Castelo of São Jorge, Chiado and Bairro Alto are a few minutes away.

SITE: <https://www.visitlisboa.com/see-do/sightseeing-activities/museums-monuments/arco-da-rua-augusta>



BELGIUM

SAILING IN THE TEJO RIVER

Where SENNEK filmed her Postcard in February.

Why here? Because sailing on the Tejo River is a great way to see the city from another perspective, one that most people never see of this, one of the most beautiful cities in the world.

How to get here? Flying to Lisbon is the simplest best way of travelling to our country. You have direct flights from the most important cities in Europe, North and South America and Africa.

What to do? From the river, just by the side of the Atlantic Ocean, you can discover a breath-taking view of the Portuguese capital but also of such emblematic places along the coast such as Estoril and Cascais.

What not to miss? Board a ferry to the other side of the river. You can just seat and enjoy the view or you can go to the beaches of Costa de Caparica.

SITE: <https://www.visitportugal.com/en/destinos/lisboa-regiao>



That's where EQUINOX filmed their Postcard in April.

Why here? Because taking a yellow tram in Lisbon is always a nice experience. Taking the 28 is a magical one.

How to get there? You can catch the line 28 of Carris yellow tram all over Lisbon but if you go for the entire ride catch it in Martim Moniz Square (near Rossio). It's a ten-minute walk from the Eurovision Village in Terreiro do Paço.

BULGARIA

TRAM 28 in Lisbon

What to do to? Just seat back and relax! The 28 travels through the city, you will be able to admire the most emblematic monuments and buildings, admire the busy life of Graça or Alfama, go through Chiado, considered the heart of Lisbon, Santa Catarina and São Bento (where the Parliament is located), the amazing Cathedral of Estrela, upto Prazeres. This route was inaugurated in 1914 and it's still a classic.

What not to miss? Don't skip anything you want to see. Step off of the tram in any stop you want and just wait for the next one.

SITE: www.visitlisboa.com/lisbon



CROATIA

TALASNAL, Lousã

The little village where FRANKA BATELIĆ filmed her Postcard in March.

Why here? Because the slate villages are one of Portugal's best kept secrets. Places where you will feel yourself inside a fairy tale, in rural houses and wonderful castles.

How to get there? There are many slate villages in the centre of Portugal, in the region between Coimbra and Castelo Branco. For this Postcard we chose the village of Talasnal, in Lousã. You can get there by car. It's a 2 and a half hour journey by car (218km) from Lisbon, close to Coimbra.

What to do to? You can taste the typical food of that region. Chanfana is one of the best known – a popular stew made with goat or lamb.

What not to miss? The entire Serra da Lousã deserves a visit. Little villages like Candal, Casal Novo or Cerdeira, the waterfall Pedra da Ferida or the Castle of Lousã (also known as Castle of Arouce) will remain in your memory forever.

SITE: www.visitportugal.com/en/content/schist-villages



CYPRUS

THE MARKETS OF LISBON

The place where ELENI FOUREIRA filmed her Postcard in March.

Why here? Every neighbourhood in Lisbon has a market, where the work begins very early. That's where you can find the fresh fish, vegetables and fruit. In recent years, some of these markets were renovated where now restaurants and bars are the main attractions. Mercado da Ribeira, in Cais do Sodré, very close to the Eurovision Village, or Mercado de Campo de Ourique, in Campo de Ourique neighborhood, are two examples of this new fashion in Lisbon.

How to get there? Mercado da Ribeira, where this Postcard was shot, is in Cais do Sodré, near the train station. You can get to this indoor market and food court walking ten minutes from the Eurovision Village or taking the metro green line to the Cais do Sodré station.

What to do to? The food court, with canteen-style communal tables, is on the western side of the building on the ground floor. With various stalls by top chefs with their examples of local products, from seafood to steak sandwiches, hamburgers, sushi and ice cream.

What not to miss? If you like to wake up early, go to the market at 6am, when it opens. It's a unique experience to see one of the most Lisbon of Lisbon places waking up. Or you can go to the Sábados da Ribeira (Saturdays at the Ribeira), explained in the site below.

SITE: <https://www.visitlisboa.com/node/7225>



CZECH REPUBLIC

PODENCE, Macedo de Cavaleiros

The place where MIKOLAS JOSEF filmed his Postcard in February.

Why here? Podence is a small village, close to Macedo de Cavaleiros, in Trás-os-Montes, the region in the northeast of Portugal. It is known for its unique carnivals, when the Caretos de Podence, diabolical figures, appear in the streets. They are, in reality, the boys of village dressed as mysterious characters in colourful clothes.

How to get there? The nearest airport is in Porto. Via the A4 motorway you can get there in 2 hours. It's a 185 km drive.

What to do? Just near Macedo de Cavaleiros, you should visit the city of Bragança, whose old castle still maintains a medieval city within its walls. From the top of the castle, you can enjoy an excellent view over the city and the vast outline of the mountains that surround it.

What not to miss? After a 40 minutes' drive, you can visit the Montesinho Natural Park. Follow the marked footpaths or cycle paths. Or you can take a drive through the park, also following the marked routes.

SITE: <https://www.visitportugal.com/en/NR/exeres/04FD358E-21E1-49C5-994B-61806F5D5CAF>



DENMARK

PALÁCIO NACIONAL DE MAFRA, Mafra

The place where RASMUSSEN filmed his Postcard in March.

Why here? Built in the 18th century by order of King João V fulfilling a promise he made to be blessed with an heir from his marriage to Maria Anna of Austria, the Royal Convent and Palace of Mafra is the most important baroque monument in Portugal.

How to get there? You can travel from Lisbon to Mafra by car, bus or train. Mafra is 36km from Lisbon and 22km north of Sintra.

What to do? Visit as much as you can! You will never see the entire Palace, of course... The building covers an area of almost four hectares (37,790 m²), including 1,200 rooms, more than 4,700 doors and windows, 156 stairways and 29 inner yards and courtyards.

What not to miss? Don't miss the Basilica. The dome is 65m high, with a 13m diameter.

In the main chapel a painting by Francesco Trevisani represents the Virgin, Jesus and St. Anthony, to whom the church is dedicated. The marble tables of the side chapels, Holy Family (south) and Blessed Sacrament (north) and the six collateral chapels are attributed to Alessandro Giusti from the Mafra school of sculpture, and his disciples. The Basilica's other high points are the ensemble of statues made by Italian masters by order of the king - the most significant collection of baroque Italian sculpture outside Italy - and the six historical organs, commissioned at the end of the 18th century by King João VI.

SITE: <https://www.visitportugal.com/en/NR/exeres/DC8D0D1D-0765-43A6-A8B4-46CD6216995F>



ESTONIA

SINTRA

The place where ELINA NECHAYEVA filmed her Postcard in March.

Why here? Sintra is a magical place, an historic village situated 20km from Lisbon. Known as the Moon Hill, UNESCO granted Sintra with World Heritage Site status.

How to get there? Departing from the Parque das Nações railway station, just near the venue, the trip from Lisbon to Sintra takes about 50 minutes by train. By car, you can take the EN6 road (usually known by locals as the Marginal), passing by Estoril, Cascais, Guincho and Colares, along the seafront.

What to do? Walk through the centre of the old town. And visit the Vila Palace in the main square. You can go to Seteais, an 18th century palace, currently converted into an hotel. The gardens are worth a visit and from its belvedere you can see Pena Palace, Monserrate, Castelo dos Mouros (Moorish Castle) and the sea in the distance. You'll never forget this day.

What not to miss? The golden sandy beaches of the Sintra coast are very popular and offer excellent restaurants to relish a fish meal and a good, refreshing white wine. While in Sintra, try a queijada and a travesseiro.

SITE: <https://www.visitportugal.com/en/content/discovering-sintra>



F.Y.R. MACEDONIA

TILE FACTORY VIÚVA LAMEGO, near Sintra

The place where the duo EYE CUE filmed their Postcard in March.

Why here? The tradition of tile making and decorating in Portugal dates back to the early centuries of the first millennium. Many patterns you can see on tiles which decorate walls, inside and out, are based on centuries old designs, while you can see the approximate era of the design of each design. There are many friezes made from tiles, often in the entrances of old buildings, hand painted two centuries ago. Keep your eyes open, if you are a fan of design through the ages, Lisbon has much to offer.

How to get there? The factory and showroom is near Sintra (7km), in Abrunheira (27km from Lisbon). You can get there catching the train in the Gare do Oriente (near the venue) to Sintra and the going to Abrunheira by bus. The shop in Lisbon is in Largo do Intendente, near Martim Moniz and Rossio. You can just walk there. It's ten minutes from the Eurovision Village in Terreiro do Paço.

What to do? Near Abrunheira, you can't skip Sintra. Walk through the centre of the old town and visit the Vila Palace, in the main square.

What not to miss? If you love Portuguese tiles you can't miss Museu do Azulejo in Lisbon, near Parque das Nações. It's located in the Madre de Deus neighbourhood.

SITE: <http://www.viuvalamego.com/handmade/category/viuva-lamego-en/>



FINLAND

ALBUFEIRA, Algarve

The place where SAARA AALTO filmed her Postcard in March.

Why here? Because the Algarve, besides the wonderful beaches and golden cliffs, the coves and blue ocean, the villages and cities, is one of the best places in the world to play golf.

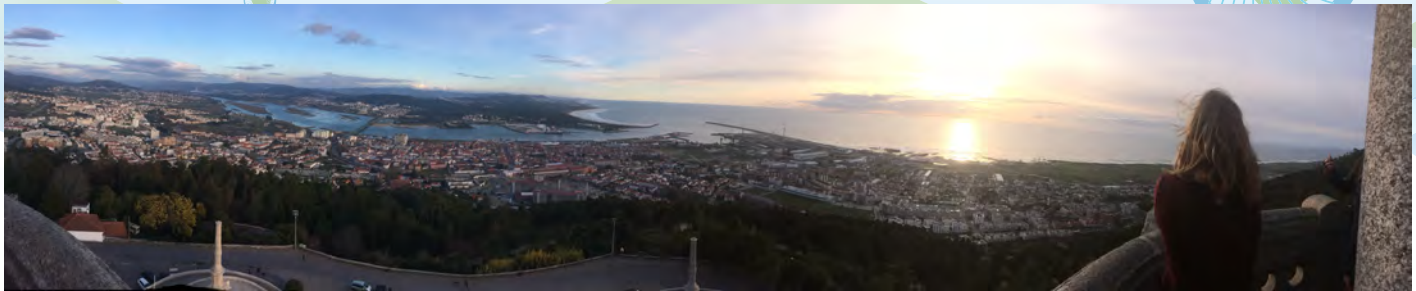
How to get there? You can go to Algarve by plane, with flights to its capital, Faro, from the major cities in Europe. If you are in Lisbon, you can get there also by train, bus or car. It's a two and a half hour journey by car through the highway A2 (277km from Lisbon to Faro). You can get a train at Gare do Oriente station (near the venue) for a 3-hour trip.

What to do to? Vilamoura, Vale do Lobo, Tavira, Quinta do Lago, Alvor, Lagos, Albufeira, you name it. There are excellent

golf courses in all the Algarve coast and they are one of the main reasons the southern region of Portugal is visited by so many tourists.

What not to miss? You can't skip the Ria Formosa Natural Park, recently voted as one of the 7 Natural Wonders of Portugal. The Ria Formosa encompasses an area of about 18,000 hectares, and is protected from the sea by five barrier-islands and two peninsulas, through an area that extends along the leeward coast of the Algarve through the municipalities of Loulé, Faro, Olhão, Tavira and Vila Real de Santo António.

SITE: <https://www.visitportugal.com/en/destinos/algarve>



VIANA DO CASTELO

FRANCE

The place where MADAME MONSIEUR filmed their Postcard in February.

Why here? You can't visit the north of Portugal without visiting Viana do Castelo. One of the most beautiful cities in the country, Viana is known for its culture, the architecture, the filigree gold work and for the stunning location, just by the sea.

How to get there? Viana do Castelo is located 77km north of Porto. You'll need around 50 minutes to get there by the A28 highway.

What to do? If you are in Viana do Castelo, you are in the "Mecca of the Contemporary Architecture" of Portugal. So you can't skip the Praça da Liberdade (designed by Fernando Távora), the City's Library (by Siza Vieira, the same award-winning architect that designed the Pavilhão of Portugal in Parque das Nações), the Youth Hostel (by Carrilho da Graça) or the City's Cultural Centre (designed by Souto Moura). The stunning view from the Santa Luzia Hill, where the Basílica of the Sacred Heart of Jesus is situated, is absolutely mandatory.

What not to miss? A bicycle ride along the coast of the river and a walk on one of the many marked trails. If you like surfing, windsurfing, kite surfing or bodyboarding you are in the right place!

SITE: <https://www.visitportugal.com/en/node/73741>



The Chinese New Year Celebrations, where ETHNO-JAZZ BAND IRIAIO filmed their Postcard in February.

Why here? It's in Lisbon, in the heart of the Portuguese capital, that the Chinese community celebrates in a unique way its New Year. A wonderful party in Martim Moniz Square, near Rossio, with a parade in the Avenue Almirante Reis – a ten-minute walk from the Eurovision Village in Terreiro do Paço. The Chinese community celebrates its New Year all over Portugal, but there is no party like Lisbon's.

How to get here? Most of European cities have direct flights to Lisbon. New York, Boston, Rio de Janeiro, São Paulo, Caracas, Toronto and other major American cities also have flights to the Portuguese capital. From the Far East you'll have to catch connecting flights.

GEORGIA

THE CELEBRATIONS OF THE CHINESE NEW YEAR IN LISBON

What to do? You've already missed the celebrations of the Year of the Dog, but Lisbon is a multicultural town where you can find restaurants, bars and music from Asia, Africa and South America. Typical food from around the world and great nights of dance are always a good choice.

What not to miss? Near Martim Moniz Square, you can visit Rossio Square where Lisbon's National Theatre and Rossio's railway station stand. And you are in Baixa Pombalina, where its straight streets full of restaurants and stores lead you just to the Eurovision Village and to the Tejo.

SITE: <https://www.visitlisboa.com/lisbon/why-lisbon>



GERMANY

CALHETA, Madeira

The island where MICHAEL SCHULTE filmed his Postcard in March.

Why here? Because if you love adventure, Madeira, in the middle of the warm waters of the Atlantic Ocean, is the perfect place to have the most amazing experiences like canoeing or paragliding.

How to get there? You can get to Madeira by plane, with direct flights from Lisbon, Porto, Ponta Delgada and some of the major European cities.

What to do to? If you are a lover of nature, Madeira is a great place to spend your vacation. You can do all-terrain biking in Funchal Ecological Park where you have also great hiking trails. Birdwatching is another activity growing in the Archipelago of Madeira.

What not to miss? If you love to dive, don't skip places like Machico, Santa Cruz, Garajau, Caniçal. In Madalena do Mar, between 21 and 30 metres deep, 180 metres from the coast, the "Bowbelle" a ship that sank a few years ago, is now an artificial reef.

SITE: www.visitportugal.com/en/destinos/madeira



GREECE

TRADITIONAL PORCELAIN FACTORY in Ílhavo

The place where YIANNA TERZI filmed their Postcard in March.

Why here? In Ílhavo, you can find one of Portugal's best known porcelain factories, which is part of the strong Portuguese ceramic tradition, from practical ware to art, from simple art to elaborate majolica.

How to get there? Ílhavo, near Aveiro, is 55 minutes away south of Porto Airport. 81 kilometres through the A1, the main motorway in Portugal. Buses and trains are also available. From Lisbon, it's a 2h30 drive through A1.

What to do to? You can't miss the museum of the factory, where objects related to the history and development of the Vista Alegre porcelain from it's foundation to our times are in display.

What not to miss? Go and say hello to the firefighters who work in the factory. Founded in October 1st 1880, the Vista Alegre Fire Brigade is the oldest private fire brigade in Portugal.
SITE: https://vistaalegre.com/pt/t/vaa_AMarca_Historia-1



HUNGARY

ÓBIDOS

The town where the AWS filmed their Postcard in March.

Why here? Because the fortified town of Óbidos it's one of the most picturesque places in Portugal, and every year it hosts a delicious Chocolate Festival.

How to get there? From Lisbon to Óbidos is an hour ride by car (84km) along the A8 motorway.

What to do to? Walk around Óbidos and enjoy the little streets and the monuments. Porta da Vila is the main gate of Óbidos and you should visit the beautiful chapel with the white and blue azulejos (tiles) that depict the passion of Christ. The castle and the Santa Maria Church both date from the 12th century while the beautiful aqueduct was constructed in the 16th century. If you want to do some shopping, Rua Direita is the right place.

What not to miss? You can't skip Ginjinha de Óbidos, a sweet cherry brandy served in small chocolate cups which can be eaten after drinking the beverage. The liquor is produced in the Óbidos region.

SITE: <https://www.visitportugal.com/en/node/73768>



ICELAND

The PUPPET MUSEUM, Lisbon

The place where ARI ÓLAFSSON filmed his Postcard in April.

Why here? Like any other capital, Lisbon has plenty of museums waiting for your visit. The Puppet Museum, located in the 17th Century Convento das Bernardas, is absolutely unique, with more than a thousand puppets.

How to get there? Convento das Bernardas, a magnificent former convent founded in 1653, is in Rua da Esperança, in Santos neighborhood. You can get there by train (just one station after Cais do Sodré) or by bus.

What not to miss? Don't expect to find just the history of puppets in Portugal. You can find Sicilian opera marionettes, traditional Russian puppets, Burmese shadow puppets among the collections in the museum

OFFICIAL SITE: www.museudamarioneta.pt/en/museum



IRELAND

PORTO SANTO ISLAND

The place where RYAN O'SHAUGHNESSY filmed his Postcard in March.

Why here? Porto Santo Island is called the Golden Island. The 11km long and 6km wide Island of the Archipelago of Madeira, in the Atlantic Ocean, with its 9km-long beach is irresistible.

How to get there? You can get there either by ferry from Madeira Island or by plane. It's a fifteen-minute flight from Funchal and during the summer season you may also find direct flights from Lisbon, Porto and some larger European airports, like London Gatwick.

What to do to? With nice weather all year, its wonderful 9km beach is the main attraction. But golf, diving, trekking or horse-back riding are some of the activities you can do in the Island.

What not to miss? Filipa Moniz, daughter of the founder of Porto Santo, was married to Christopher Columbus. It is not known for sure if Columbus actually lived in the Island, but the house reputedly once occupied by him is now a museum: Casa Museu Cristóvão Colombo shows in diagrams the journeys of the explorer, copies of maps from the 15th and 16th centuries and a model of one of his boats.

SITE: <https://www.visitportugal.com/en/destinos/madeira/73830>



ISRAEL

LISBON ROOFTOPS

The place where NETTA filmed her Postcard in March.

Why here? Because from all the rooftops of Lisbon you have a magnificent view of the city. You might be in a swimming pool, in a restaurant, a bar or a hotel: it's always a dream come true. The river, the hills, the light and some unique sunsets. That's why rooftops are so popular in the city.

How to get there? If you are already in Lisbon for the Eurovision Song Contest, you can ask at your hotel or at the Turismo de Portugal kiosk near the Press Centre in the venue. They will tell you where to find the best rooftops in town.



What to do to? Getting together for drinks in Lisbon usually happens before dinner just in time to see the sun going down. But if the weather is good, Lisboetas love to be outside, enjoying a drink with a view, till the late hours.

What not to miss? The view, of course! Make sure you can see the river, the 25 de Abril Bridge, Alfama, the Castle of São Jorge or Terreiro do Paço (where the Eurovision Village and the Euroclub are located).

SITE: www.visitlisboa.com



ITALY

PORTO

The city where ERMAL META and FABRIZIO MORO filmed their Postcard in April.

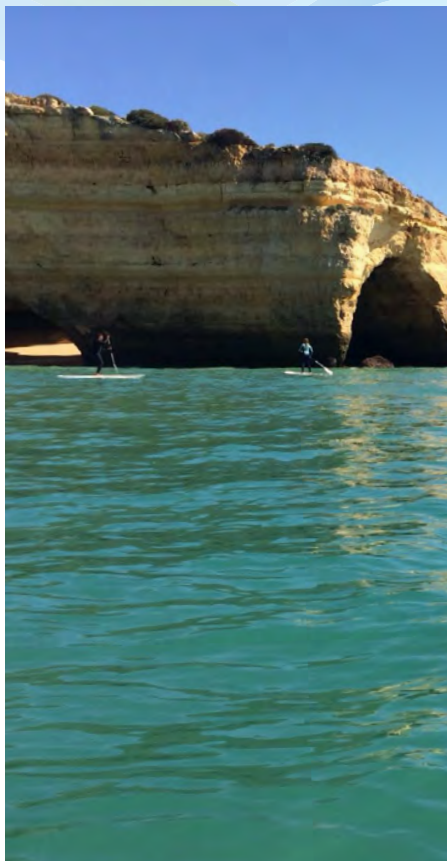
Why here? Porto is the second most important city in Portugal, after Lisbon, and in the link below you can find the ten spots you can't miss in the city. But really, it's not hard to discover twenty or thirty places you will never forget in Porto. From the historical Ribeira to the modern cultural museums, from the Foz, where the Douro River meets the Ocean, to the Torre dos Clérigos, from the train station of São Bento to the Lello Bookshop or the Café Majestic, Porto is a city to spend a vacation. Not just to visit for a few hours or a day or two.

How to get there? You can get there by plane from any major European airport. If you are in Lisbon for the Eurovision Song Contest, you can catch a train at the Gare do Oriente, near the Venue, or go by car.

What to do to? Enjoy the rich cultural life of the city as much as you can. Casa da Música or the Museum of Serralves are absolutely mandatory.

What not to miss? The typical gastronomy of Porto. The most popular dishes? Tripas à Moda do Porto (Porto tripe with beans, sausage, vegetable and herbs) and the Francesinha (a sandwich filled with four or five different meats, covered in cheese and drenched in sauce). Caldo Verde, the Cozido à Portuguesa, and codfish with cream are also very popular and tasty in Porto, although they are cooked all over Portugal.

SITE: www.visitportugal.com/en/content/top-10-porto



LATVIA

BENAGIL SEA CAVE, in Algarve

The place where LAURA RIZZOTTO filmed her Postcard in April

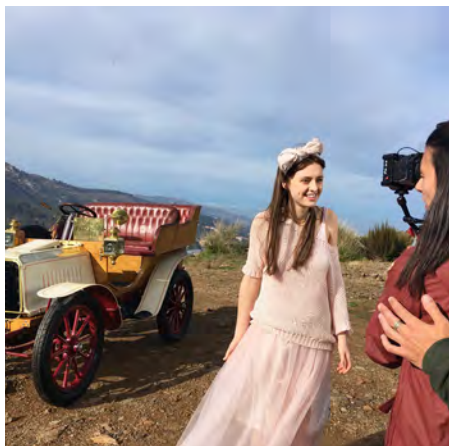
Why here? The Benagil Sea Cave, in the Algarve beach of Benagil, is one of the most beautiful wonders of Portugal. Considered one of the world's "Top Ten Coolest Caves" by The Huffington Post, Benagil is located in Lagoa.

How to get there? You can get to Lagoa by car, driving from Faro (60km in A22). To visit the sea cave you can take a boat or an organized tour in boats that leave from Albufeira, Lagos, Portimão, Carvoeiro, Ferragudo and Vilamoura.

What to do to? Visit the sea caves nearby. Near that zone you have more than ten incredible caverns that are worth a look. Make your visits by boat and never swim there. The tides may get high and you may not be able to swim back safely

What not to miss? A boat trip in the coast. You are in one of the most beautiful places in Algarve. Enjoy the sun, the sea and the beaches.

SITE: <https://www.visitportugal.com/en/NR/exeres/980AF7E1-613C-426C-9B2F-E3A68794E514>



LITHUANIA

CARAMULO AUTOMOBILE MUSEUM,
Caramulo

The place where IEVA ŽASIMAUŠKAITĖ
filmed her Postcard in April.

Why here? Because Caramulo Automobile Museum has an impressive collection of 65 historic and classic cars, some of them are part of Portuguese History. The car that belonged to Oliveira Salazar, the dictator that ruled Portugal from 1932 to 1968, or the sports car that Spanish General Franco offered Portuguese President Craveiro Lopes in the fifties are among these incredible and beautiful machines. The views from and across the serra of Caramulo are quite breath-taking.

How to get there? If you are in Lisbon and decide to go by car, you can take A1. It's a 3-hour trip (282km). From Porto to Caramulo, the journey isn't that long. You'll take 1h20 along the A1 and A25 (111km)

What to do to? Besides the cars, the museum has motorcycles, bicycles and even toys. Devote your time to a careful visit to see all these precious items in perfect states of preservation.

What not to miss? Not usual in an Automobile Museum but something you can't really skip in Caramulo: the art collection, that includes paintings given by Picasso, Salvador Dali and Vieira da Silva, furniture, porcelain, silver and four 16th century Tournai tapestries depicting the Portuguese voyages of discovery.

SITE: www.visitportugal.com/en/content/museu-do-caramulo



MALTA

COUDELARIA DE ALTER DO CHÃO

The place where CHRISTABELLE filmed her Postcard in February.

Why here? Alter do Chão is a town that dates back to the Roman Period, mainly known by the Coudelaria Real, the Royal Stud Farm, founded in 1748.

How to get there? Alter do Chão is a municipality in the District of Portalegre, Alentejo. It's a two hour drive from Lisbon (196km).

What to do to? You can have riding lessons or carriage tours, visit the riding schools, the stables and the museum.

What not to miss? Admire the haughtiness of the Alter Real breed of Lusitanian horse and you can't skip the Coach House, with its collection of objects related to horse breeding.

SITE: <https://www.visitportugal.com/en/NR/exeres/EEE34A7A-9D1A-4803-8267-A82212EE7763>



MOLDOVA

VIDAGO

The place where DoReDoS filmed their Postcard in March.

Why here? The Vidago Palace, in Trás-os-Montes, in the northern region of Portugal, is the symbol of an era. The spa was the favourite retreat of the court in the 19th century and the hotel maintains today a unique belle époque aura.

How to get there? You can go by car. It's an hour and a half journey from Porto (134km) via the A7 highway.

What to do to? You can take a vacation in the hotel and just enjoy and relax, and you can use the spa. The cold sparkling waters of Vidago are greatly appreciated as mineral water.

What not to miss? The city of Chaves is minutes away. You can't skip its monuments and museums. And don't miss the local culinary traditions. The Pastel de Chaves and the cured hams are known and appreciated across the entire country.

SITE: www.visitportugal.com/pt-pt/content/vidago-palace-hotel

MONTENEGRO

FEIRA DA LADRA, Alfama, Lisbon

The place where VANJA RADOVANOVIĆ filmed his Postcard in March.

Why here? Feira da Ladra, Lisbon's flea market, is one of the main attractions of the city. Like any flea market, Feira da Ladra is much more than a market. It is a place where all the cultures of the city mix in a perfect example of what makes Lisbon a unique city.



How to get there? You can take the tram 28 or the tram 12 up the Hill or go by subway.

The closest metro station is Santa Apolonia, the final stop of the blue metro line. Head in a north and it's less than 150m away.

What to do to? Clothes, books, coins, antiques, furniture, hand-made artisan goods, records. You can find everything in Feira da Ladra if you have the time for a nice walk. The market is held every Tuesday and Saturday.

What not to miss? The market is nearby the Santa Engrácia Church, the National Pantheon: one of the most iconic monuments of Lisbon with an amazing view over the river and the city.

SITE: <https://www.visitlisboa.com/node/1253>



NORWAY

XABREGAS, Lisboa

The place where ALEXANDER RYBAK filmed his Postcard in April.

Why here? Because Xabregas is one of Lisbon neighbourhoods where Urban Art was born and some prestigious artists, like Tamara Alves, work. Local artists like Vhils or Bordalo II (who creates pieces of art from trash) are now worldwide names, making exhibitions all over Europe and in the United States.

How to get there? Look around! Urban art is all over Lisbon.

What to do to? Get out of the venue and walk around town! Some examples you can't really miss: the Graça literary walk (murals depicting the Portuguese writers who lived in the neighbourhood), the facade of one of the buildings of LX Factory in Alcântara with a portrait by Vhils, the Fado Vadio, portrayed in a series of façades going up Rua da Madalena and Escadinhas de São Cristovão on the way up to Castelo de São Jorge.

What not to miss? To be really sure you don't miss a work of art that can be just by your side, get a good Lisbon Urban Art Guide!

SITE: www.visitportugal.com/en/content/street-art-in-lisbon



POLAND

ERICEIRA

The village where GROMEE and LUKAS MEIJER filmed their Postcard in April.

Why here? Ericeira is a fishing village near Sintra, known for its waves and considered one of the best places in Europe for surfing. Besides surfing, Ericeira is also known for its gastronomy, with great fish and seafood.

How to get there? Ericeira is 35km northeast of Lisbon and 18km from Sintra. You can get there by car, train or bus.

What to do to? Besides the gastronomy and the always fun night life, Ericeira is a place you have to go if you love surfing. In 2011 it was chosen as one of the eight World Surfing Reserves and the only one in Europe. Several local schools can teach you the basics of this sport. If you are a pro, you'll be at home!

What not to miss? For a great dive or just catch some sun, you can't skip the beaches of Pescadores and Baleia Sul.

SITE: www.visitportugal.com/en/NR/exeres/7DFD534D-E4AE-4236-9576-FBA461621E27



PORTUGAL

SCHOOL SHIP SAGRES

The ship of the Portuguese Navy where CLÁUDIA PASCOAL filmed her Postcard in March.

Why here? Because Sagres, the school ship of the Portuguese Navy, is the itinerant ambassador of Portugal all over the world. The Portuguese President called it recently “the expression of the Portuguese soul”. Sagres is the most decorated national ship and, in the last 55 years, has visited more than 60 countries and stopped in more than 160 harbours.

How to get there? When in Portugal, Sagres is based in the Naval Base of Alfeite, in Almada, across the Tejo River.

What to do to? You can be in one of the most beautiful ships in the world and a true symbol of Portugal. The 80 year old Sagres was built in Germany, belonged to the United States and Brazil before being bought by the Portuguese navy in 1962. Visits can be organized via the e-mail marinha.rp@marinha.pt

SITE: <http://sagres.marinha.pt/pt>



ROMANIA

PASSADIÇOS DO PAIVA (Paiva Walkways),
Arouca

The place where THE HUMANS filmed their Postcard in April.

Why here? Because the Paiva Walkways are 8km of wooden walkways surrounded by a unique landscape in a true natural sanctuary. A walk that combines biology, geology, archeology and history that you will never forget.

How to get there? Paiva Walkways are located on the left bank of the Paiva River, in the Arouca municipality, Aveiro (307km from Lisbon and 60km from Porto). Access at either end, in Espiunca or in Areinho.

What to do to? Enjoy and live every minute of your experience!

What not to miss? In the Arouca Geopark there are guided visits, bathing areas, recreation and leisure areas, you can practice adventure sports. And above all, it's a beautiful place!

SITE: www.passadicosdopaiva.pt/en



RUSSIA

THE LISBON OCEANARIUM

The place where YULIA SAMOYLOVA filmed her Postcard in March.

Why here? The Lisbon Oceanarium, near the Venue, in Parque das Nações, has 8000 marine creatures, a big central aquarium with five million litres of saltwater, surrounded by four marine habitats. It has two levels, near the surface and under water. It's the second largest oceanarium in Europe.

How to get there? You can walk there from the Venue. It's a five minute walk.

What to do to? Take a morning or an afternoon and don't miss a thing! You are in one of the most beautiful spots in the world.

What not to miss? Look for the temporary exhibitions. You won't regret it!

SITE: www.oceanario.pt/en



SAN MARINO

FUNCHAL, Madeira

The city where JESSICA and JENNIFER BRENING filmed their Postcard in March.

Why here? The capital of Madeira is one of major Portuguese cities, a modern and cosmopolitan place to spend a wonderful vacation. Known for its warm climate all year round, its top class hotels and restaurants, Funchal faces the Atlantic Ocean in the south coast of the Island. Its port in one of the most important of the ocean.

How to get there? Amsterdam, Barcelona, Belfast, Berlin, Brussels, Cologne, Copenhagen, Dusseldorf, Edinburgh, Frankfurt, Geneva, Glasgow, Helsinki, London, Manchester, Paris, Stockholm, Vienna, Warsaw, Zurich, you name it. Direct flights to Funchal are easy to find, and you can always get them from Lisbon or Porto.

What to do to? Visitors to Madeira can just relax and enjoy one of its five star hotels, but the island is full of activities. You can dive in the crystal-clear waters, surf, take magnificent boat trips, watch whales and swim with the dolphins, visit the coast, play golf or enjoy the nightlife.

What not to miss? The wicker toboggan ride is a mandatory experience in the city. It first appeared around 1850 as a fast mean of transport for people living in Monte. Today the toboggan ride is one of the most popular tourist attractions in the Island of Madeira. Ten minutes downhill, in a total course of two kilometres, reaching a speed of up to 48km/hour.

SITE: www.visitportugal.com/en/content/discovering-funchal



SERBIA

PORT WINE CELLAR, Gaia

The place where SANJA ILIĆ & BALKANIKA filmed his Postcard in March.

Why here? Port Wine is one of the major ambassadors of Portugal in the world. If you visit the Porto region you must visit one of the cellars. And if you visit one of the cellars, make sure you have time to visit the Porto region...

How to get there? You can fly to Porto from several cities in Europe or through Lisbon. If you are in Lisbon for the Eurovision Song Contest, make sure you have more than a day. By train or by car, it's a 3 hour trip (313km on the A1 motorway)

What to do to? You must visit the Museum of Serralves and its gardens. You can't skip this work of design by architect Siza Vieira. He is the Pritzker Prize winner architect that designed Pavilhão de Portugal, at the Venue, in Lisbon. And you have to go to the ancient Torre dos Clérigos and to the recent Casa da Música, visit the Ribeira side by side with Douro River, and the Foz, where Douro and the ocean get together.

What not to miss? As well as visiting some wine cellars, seek out some authentic Northern Portuguese cuisine, made from local high quality produce.

SITE: <https://www.visitportugal.com/en/destinos/porto-e-norte/73735>



SLOVENIA

ISLAND OF FAIAL, Azores

The island where LEA SIRK filmed her Postcard in March.

Why here? Nine wonderful islands are waiting for you in the middle of the Atlantic Ocean, where you can find all kinds of landscapes and experiences you'll never forget. Faial, in the central group, with a high point at 1,043 metres above sea level, gives you a breath-taking view of Pico Island and, on clear days, as far as Graciosa Island (144km away).

How to get there? You can get to Faial Island by plane, with flights from São Miguel and Terceira Islands, from Lisbon, Porto and some European capitals, like London.

What to do to? Faial is one of the most beautiful islands in the archipelago and deserves your full attention. Two suggestions: The Capelinhos Volcano, where the last volcanic eruption in Azores happened, in 1958, and Caldeira, an ancient volcano that is the genesis of the island.

What not to miss? Being an island, the cuisine of Faial is full of excellent flavours from the sea. The fish broth and stew or the stewed octopus with wine are just two of the typical dishes of the island.

SITE: www.visitportugal.com/en/destinos/acores/73818



SPAIN

FURNAS, ISLAND OF SÃO MIGUEL, AZORES

The place where AMAIA and ALFRED filmed their Postcard in March.

Why here? Because it's unique! A Lake, a valley and a village. This is the landscape of Furnas, in São Miguel, one of the nine Azores islands. With its botanical garden founded in the 18th century, its centennial trees and magnificent vegetation, the Furnas region is mainly known for its volcanic activity, with hot geysers, the hottest reaching 99°C. The valley is considered one of Europe's richest hydrological regions, being crossed by two streams, one cold and the other warm. Many visit Furnas for the therapeutic effects of the water. And many visit Furnas to eat the cozido, one of the typical dishes of the region, prepared by lowering a pot full of meats and vegetables in a hot spring heated by the volcanic system.

How to get there? You have daily flights from Lisbon airport (2h25m trip) and direct

flights from the United States, Canada and several European cities.

WHAT TO DO TO? The entire island is worth a visit. Take your time and don't miss the Lagoa das Sete Cidades in Ponta Delgada. It is the largest freshwater lake of Azores, situated in the crater of a dormant volcano. Lagoa do Fogo, in Ribeira Grande, is a crater lake, the highest lake in São Miguel, surrounded by mountains with transparent waters, a peninsula and white sand beaches. You can't skip it.

What not to miss? An architectural tour in Ponta Delgada. The capital of the Island, lying around a natural bay, stands out for the large number of historical buildings, including Todos os Santos Church and São Sebastião Church.

SITE: <https://www.visitportugal.com/en/destinos/azores>



SWEDEN

SERRA DA ESTRELA

The place where BENJAMIN INGROSSO filmed his Postcard in April.

Why here? Because Serra da Estrela is the highest mountain in continental Portugal, the only ski resort, and also the place where one of the most famous Portuguese of cheeses is made: Queijo da Serra..

How to get there? You can get to Serra da Estrela by car, driving from Lisbon through highways A1 and A23. It's a long journey of 3 hours and 10 minutes (294km). From Porto, you'll take 2 hours and 40 minutes through A1 and A25 (194km).

What to do to? The snow is gone now, but there are plenty of things to do in Serra da Estrela. You can admire the glacial valleys at Manteigas, Loriga or Covão do Urso and Covão Grande and follow the unforgettable 25 Lagoon Itinerary.

What not to miss? You can't skip Torre. Is the highest point of the Serra, at 1,993 metres, an area with breath-taking mountain drops where you can really feel what Nature is.

SITE: www.visitportugal.com/en/node/73759



SWITZERLAND

PORTO

The city where ZIBBZ (siblings CORINNE and STEFAN GFELLER) filmed their Postcard in April.

Why here? Porto is the second city of Portugal, known worldwide for its magnificent wine, for its sports, mainly soccer, and cultural activities. Porto is where Portuguese Cinema began in 1896 and it's the city where the most known and awarded Portuguese filmmaker in the world, Manoel de Oliveira, lived his long life of 106 years.

How to get there? You can fly to Porto from any major European city. If you are in Lisbon, you can drive along the A1 or just take the train at Gare de Oriente, near the venue.

What to do to? A helicopter ride is a wonderful idea to see all the beauty of the city from above. But there is so much to see in Porto and around. Ribeira, side by side the Douro River, the Foz, where the Ocean meets the city, the narrow old streets, the wine cellars on the other side of the river in Gaia, the historical bridges.

What not to miss? The greatest party in the city is in June 23rd, the Night of São João. São João is the saint of Porto and that's the evening when everybody comes to streets and celebrates with music, food and drink and a very local tradition: hit each other with garlic flowers or soft plastic hammers. And don't think about going to bed early. The party only stops when the sun rises, on the 24th.

SITE: <https://www.visitportugal.com/en/destinos/porto-e-norte/73735>



THE NETHERLANDS

CASTELO DE SÃO JORGE, Lisbon

The place where WAYLON filmed his Postcard in March.

Why here? Castelo de São Jorge has the most amazing view of Lisbon. It's situated on the highest hill of the city.

How to get there? You can walk from the Eurovision Village at Terreiro do Paço up the hill, pass through the Cathedral of Lisbon and get to the Castle. Or you can take the bus nº37 or the yellow tram nº12 from Praça da Figueira or the nº28 from the Martim Moniz.

What to do to? Open 7 days a week, from 9 in the morning to 9 in the evening, the castle is a place where you can enjoy Portuguese heritage, get to know a little about Lisbon's History at the Permanent Exhibition, explore the traces of the Moorish neighbourhood dating back from the

11th century at the Archaeological Site, discover yet unseen sights over the city on the Camera Obscura.

What not to miss? The garden of the Castelo de São Jorge is the only remaining green space in Lisbon where the primary native species of Portuguese forest predominate. Visitors can observe such trees as cork oak, olive, carob, arbutus, umbrella pine and various fruit trees, in memory of the vegetable garden of the Royal Palace of the Alcáçova.

SITE: <https://www.visitportugal.com/en/NR/exeres/58A74101-6752-46A7-A912-8D12C251B7ED>



UKRAINE

VILA NOVA DE MILFONTES

The place where MELOVIN filmed his Postcard in April.

Why here? Because the Vicentina Coast, from Alentejo to Algarve, bathed by the ocean, has the most wonderful beaches in Portugal, spreading through 110km of coastline and 75 thousand hectares of protected area. In the Vicentina Coast Natural Park, you will find a large number of animal species, diverse habitats and amazing wildlife.

How to get there? You can go to the Vicentina Coast by car from Lisbon, taking highway A2 to Algarve and then, after 100km, taking the IP8 route to Sines. If you travel from Faro, go on the A22 as far as Lagos/Bensafrim.

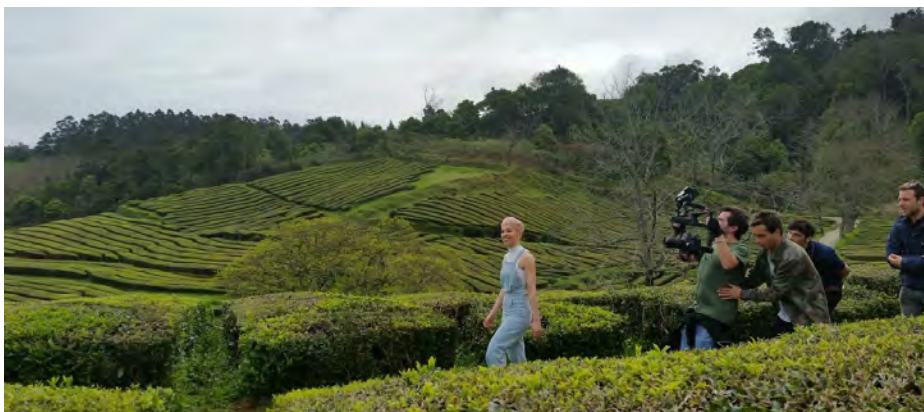
What to do to? The beaches are irresistible. Take your time to enjoy the sea and the dunes, the cliffs and the coastal plains, the valleys and the pine forests, to visit the rivers and see thousands of birds migrating, if you're visiting in the autumn. While in little coastal villages, try the fish and the seafood in the small restaurants.

What not to miss? Travel all the way along the Costa Vicentina, until you reach the Algarve, and the Fortaleza de Sagres. The southwesternmost point in the European Continent, referred to in antiquity as the Promontorium Sacrum, evokes the memory of Infante Dom Henrique and the Portuguese Discoveries. The fortress was built in the 15th century.

SITE: <https://www.visitportugal.com/en/node/73805>

UNITED KINGDOM

TEA PLANTATION, SÃO MIGUEL, AZORES



The place where SuRie filmed her Postcard in March.

Why here? Because the tea plantation in Azores Island of São Miguel is the only one in Europe. It's that rare! The seeds from the original Azorean tea bushes are thought to

have been brought to the island from Rio de Janeiro, Brazil, in the early 19th century.

How to get there? Nowadays, São Miguel has only one tea plantation. It's located in Maia, near Ribeira Grande. It's a 20 minute trip by car (23km) from Ponta Delgada, the capital of São Miguel.

What to do to? You can visit the plantation, the factory and tea room. During the week you can be among the workers and see the old machinery still working and still looking very good.

What not to miss? Take your time and go to Maia, where you can also visit the natural pools, the Fonte Velha, and three belvederes: Miradouro do Frade, Miradouro da Eirinha and Miradouro da Fonte do Buraco.

SITE: www.visitportugal.com/en/destinos/acores